

H2Teesside Project

Planning Inspectorate Reference: EN070009

Land within the boroughs of Redcar and Cleveland and Stockton-on-Tees, Teesside and within the borough of Hartlepool, County Durham

Document Reference: 2.16 Indicative Industrial Gases Connection Plans

The Infrastructure Planning (Applications: Prescribed Forms and Procedure) Regulations 2009 - Regulation 5(2)(o)

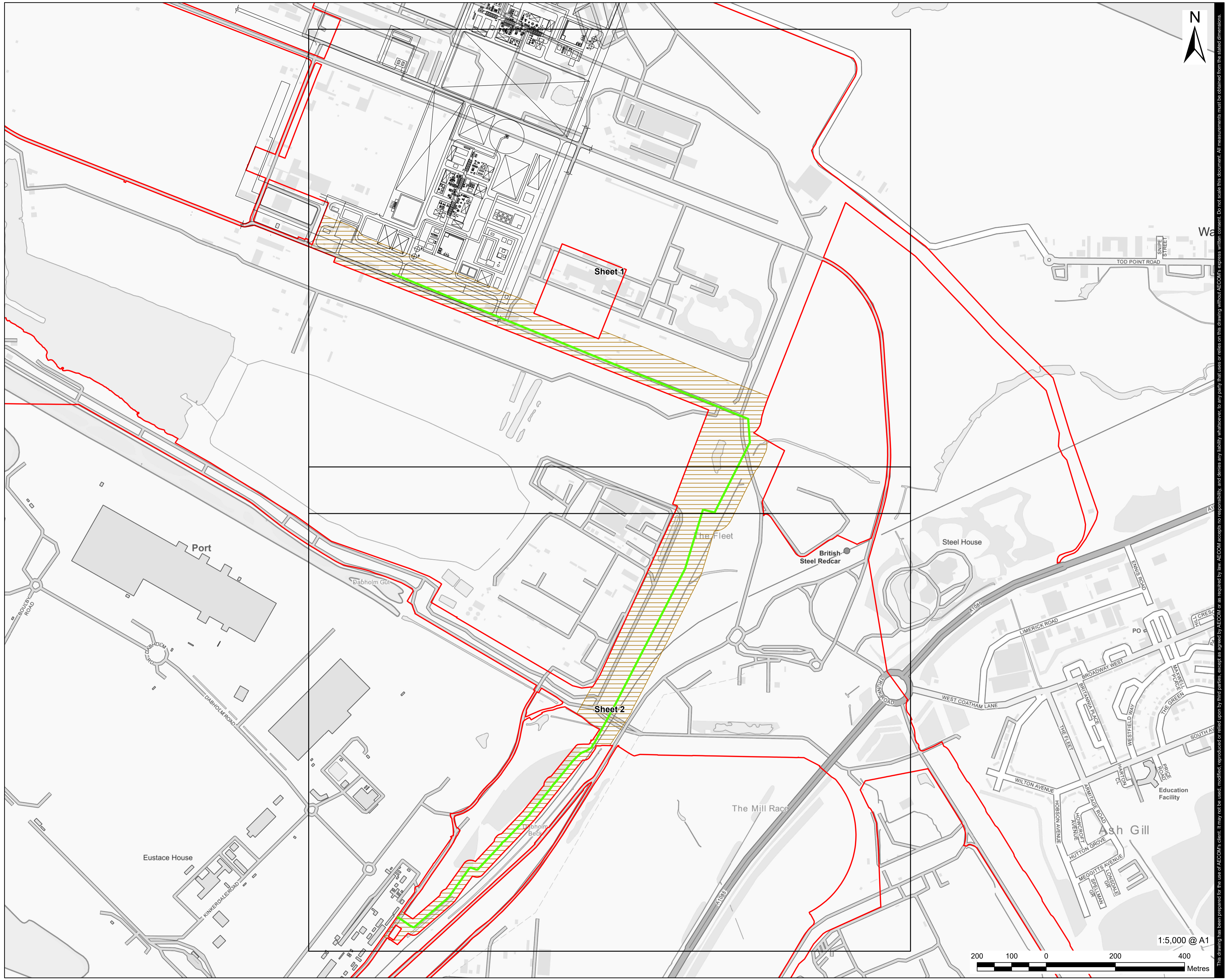


Applicant: H2 Teesside Ltd

Date: May 2024

DOCUMENT HISTORY

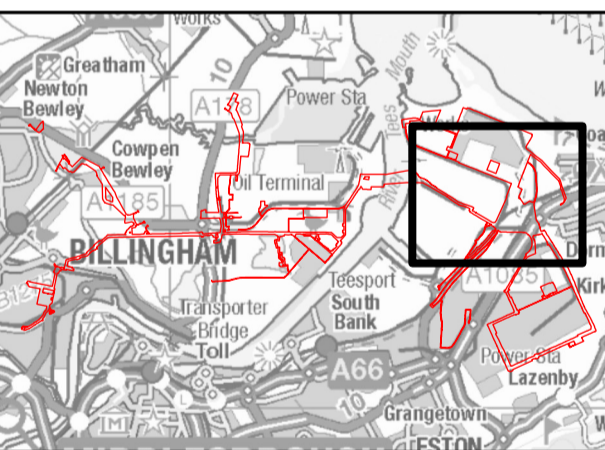
DOCUMENT REF	2.16		
REVISION	1		
AUTHOR	MARYSE BUOT		
SIGNED	MB	DATE	22.05.24
APPROVED BY	JORDAN LEWIS		
SIGNED	JL	DATE	22.05.24



LEGEND

- Order Limits
- Detailed Sheet Number
- Plot Plan
- Work No. 8 - Oxygen and Nitrogen Gas Connections
- Indicative Oxygen and Nitrogen Connection

Infrastructure Planning (Applications: Prescribed Forms and Procedure) Regulations 2009 Regulation 5(2)(o).



NOTES

- 1: Reproduced from Ordnance Survey digital map data © Crown copyright 2024. All rights reserved. License number 0100031673.
- 2: Contains Ordnance Survey Data © Crown Copyright and database right 2024.

APPLICATION REFERENCE

H2T_March24_DCO_2.16_Rev1

ISSUE PURPOSE

FOR DCO APPLICATION

PROJECT NUMBER

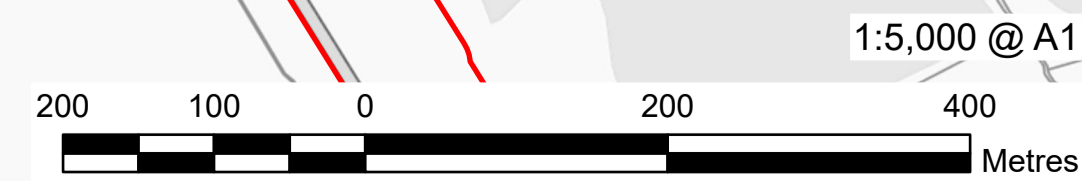
60689030

DRAWING TITLE

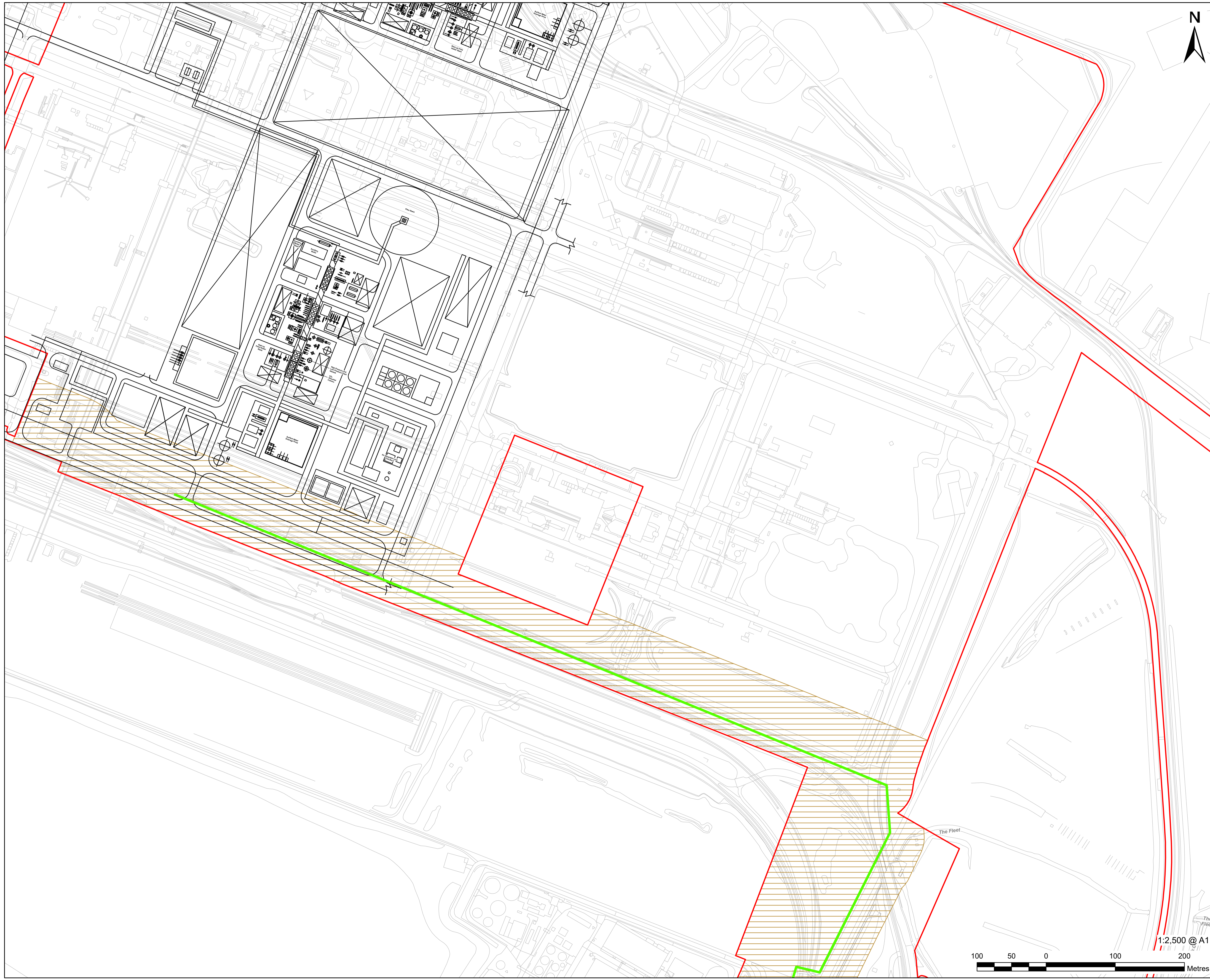
Indicative Industrial Gases Connection Key Plan

SHEET NUMBER

Sheet 1 of 1



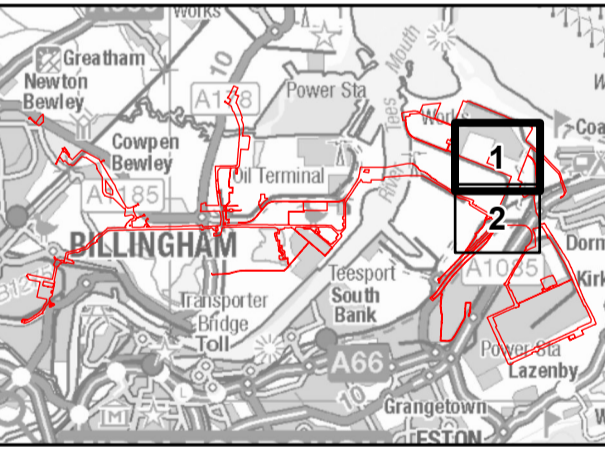
This drawing has been prepared for the use of AECOM's client. It may not be used, modified, reproduced or disseminated without the express written consent of AECOM. AECOM accepts no responsibility, and denies any liability whatsoever, to any party that uses or relies on this drawing without AECOM's express written consent. Do not scale this document. All measurements must be obtained from the stated dimensions.



LEGEND

- Order Limits
- Plot Plan
- Work No. 8 - Oxygen and Nitrogen Gas Connections
- Indicative Oxygen and Nitrogen Connection

**Infrastructure Planning
(Applications: Prescribed Forms
and Procedure) Regulations 2009
Regulation 5(2)(o).**



NOTES

- 1: Reproduced from Ordnance Survey digital map data © Crown copyright 2024. All rights reserved. License number 0100031673.
- 2: Contains Ordnance Survey Data © Crown Copyright and database right 2024.

APPLICATION REFERENCE
H2T_March24_DCO_2.16_Rev1

ISSUE PURPOSE
FOR DCO APPLICATION

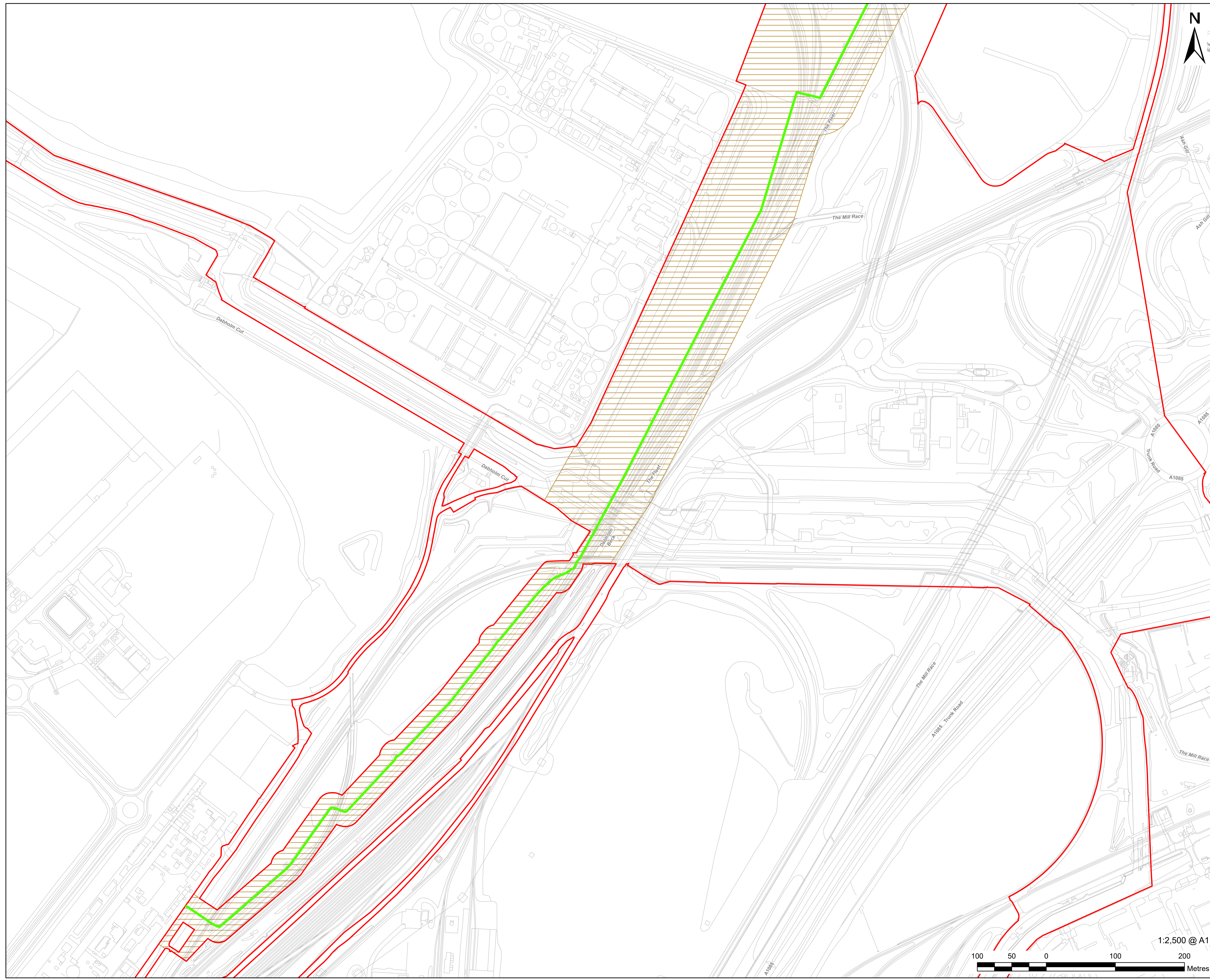
PROJECT NUMBER
60689030

DRAWING TITLE
Indicative Industrial Gases
Connection Plan

SHEET NUMBER
Sheet 1 of 2



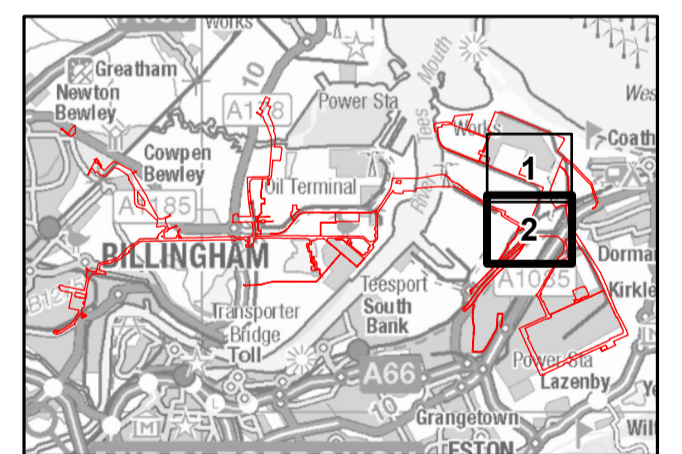
This drawing has been prepared for the use of AECOM's client. It may not be used, modified, reproduced or relied upon by third parties, except as agreed by AECOM or as required by law. AECOM accepts no responsibility, and denies any liability whatsoever, to any party that uses or relies on this drawing without AECOM's express written consent. Do not scale this document. All measurements must be obtained from the stated dimensions.



AECOM Limited
100 Embankment,
Cathedral Approach,
Manchester, M3 7FB
www.aecom.com

- Order Limits
- Work No. 8 - Oxygen and Nitrogen Gas Connections
- Indicative Oxygen and Nitrogen Connection

**Infrastructure Planning
(Applications: Prescribed Forms
and Procedure) Regulations 2009
Regulation 5(2)(o).**



NOTES

- 1: Reproduced from Ordnance Survey digital map data © Crown copyright 2024. All rights reserved. License number 0100031673.
- 2: Contains Ordnance Survey Data © Crown Copyright and database right 2024.

APPLICATION REFERENCE

H2T_March24_DCO_2.16_Rev1

ISSUE PURPOSE

FOR DCO APPLICATION

PROJECT NUMBER

60689030

DRAWING TITLE

Indicative Industrial Gases
Connection Plan

SHEET NUMBER

Sheet 2 of 2



This drawing has been prepared for the use of AECOM's client. It may not be used, modified, reproduced or relied upon by third parties, except as agreed by AECOM or as required by law. AECOM accepts no responsibility, and denies any liability whatsoever, to any party that uses or relies on this drawing without AECOM's express written consent. Do not scale this document. All measurements must be obtained from the stated dimensions.